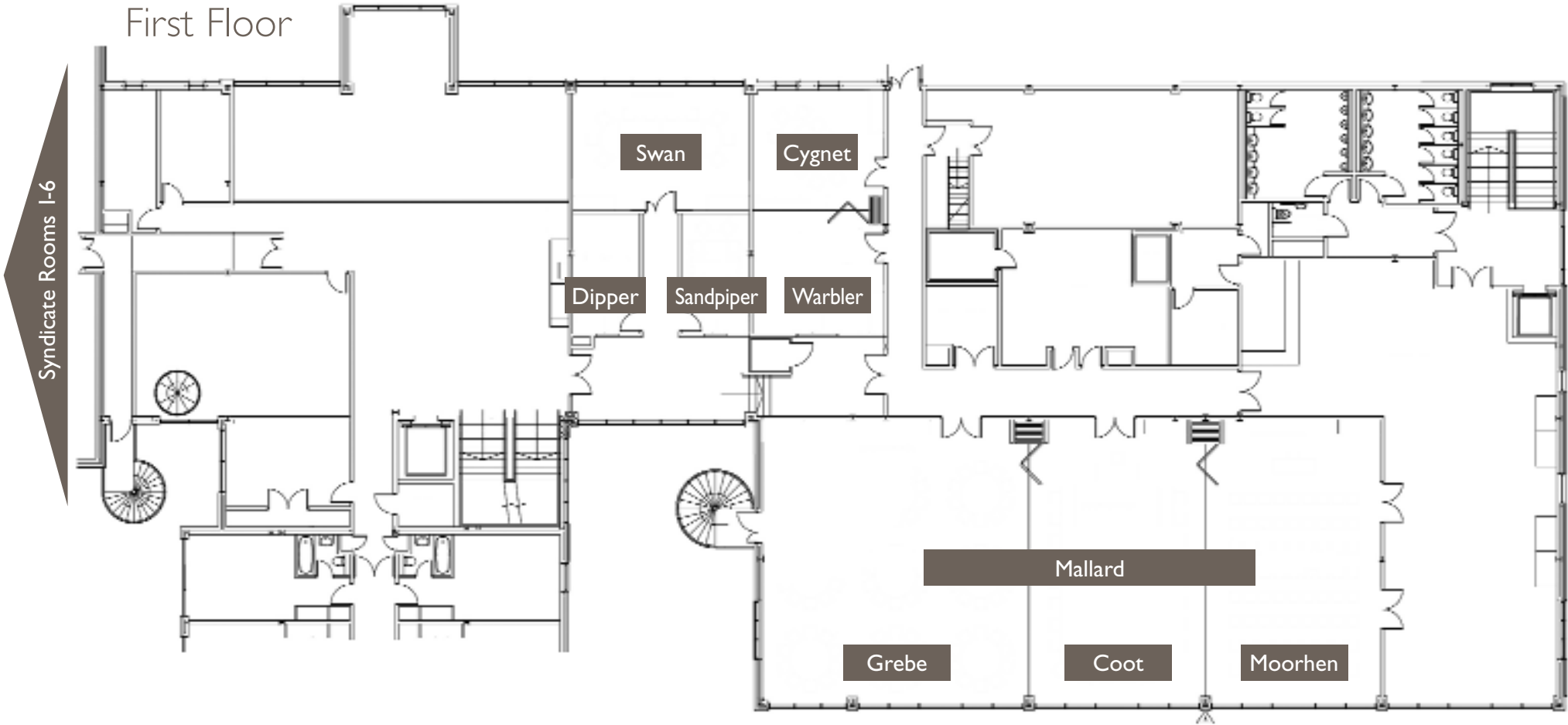


Four Pillars Cotswold Water Park - Function Room Specifications



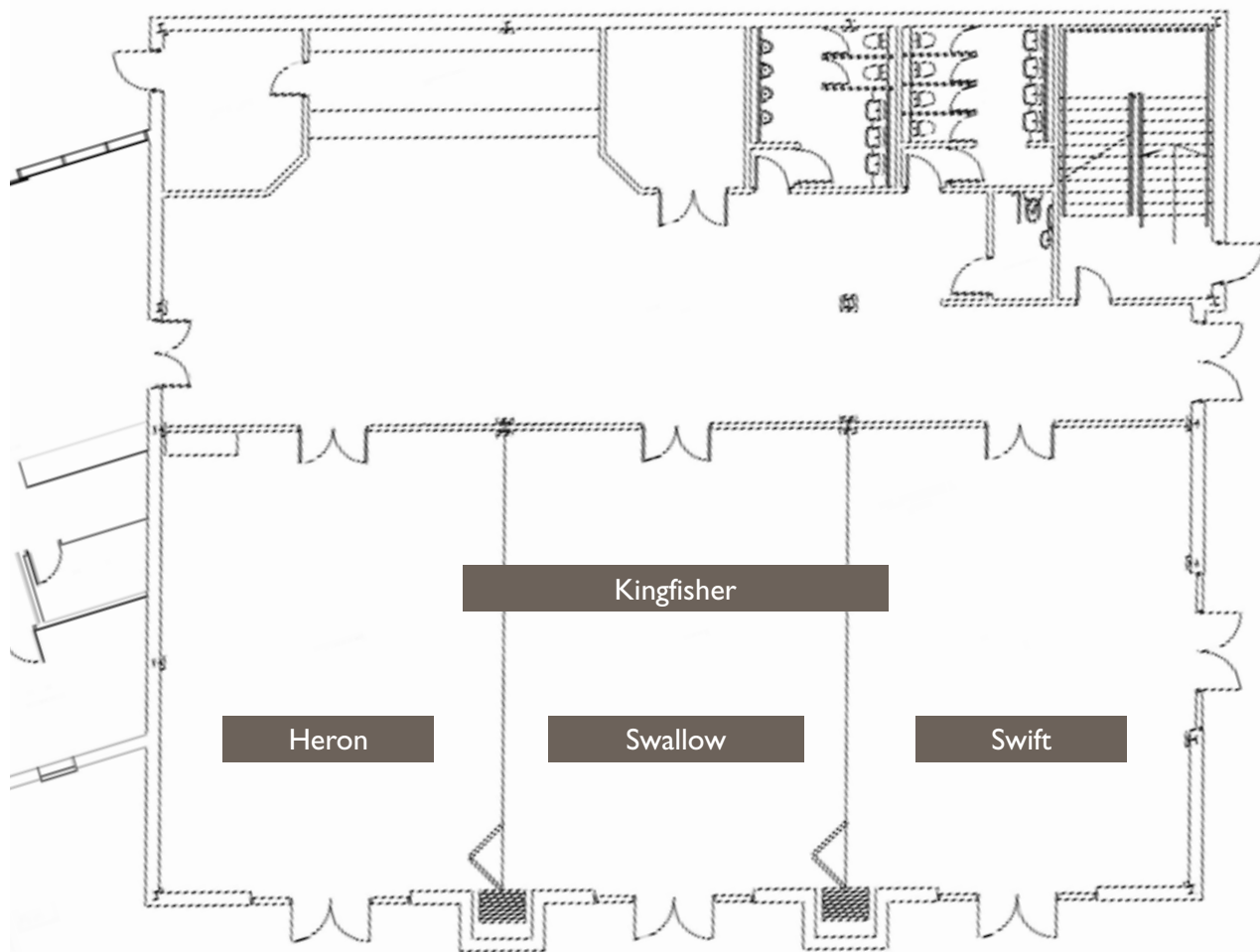
COTSWOLD WATER PARK

With us, you're at home

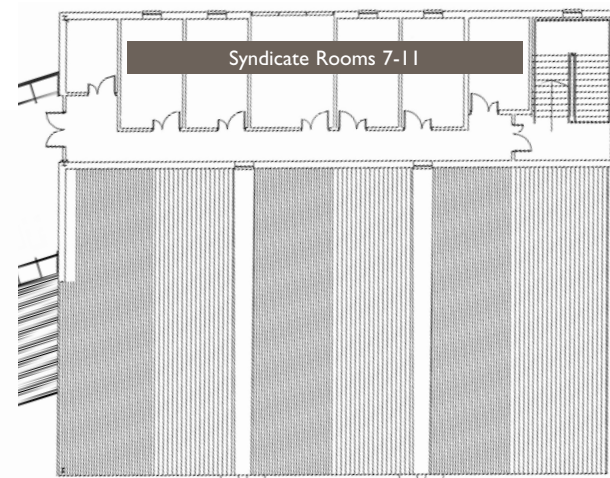
Cotswold Water Park Four Pillars Hotel, Lake 6, Spine Road East, South Cerney, Gloucestershire GL7 5FP Tel: 01285 864000 Fax: 01285 864001 Email: waterpark.conference@four-pillars.co.uk

Four Pillars Cotswold Water Park - Function Room Specifications

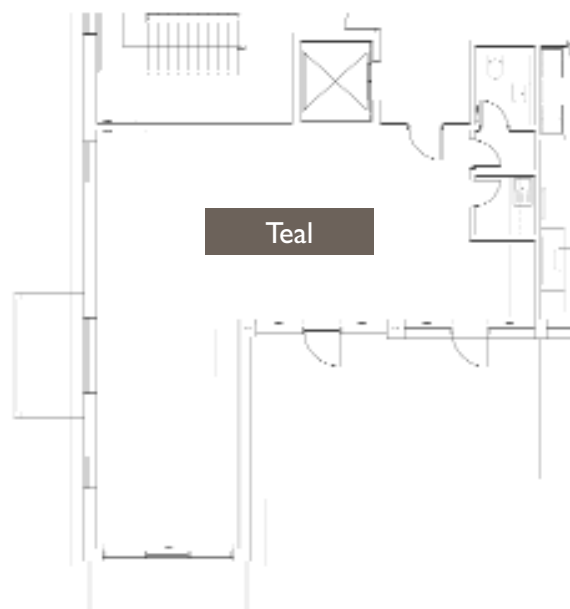
Ground Floor



First Floor



Second Floor



Four Pillars Cotswold Water Park - Function Room Specifications

Room	Size (m)	Area (m2)	Height (m)	Air Con	Boardroom	Classroom	U Shape	Theatre	Banquet	Cabaret
FIRST FLOOR										
Mallard	26.4 x 12.1	319	3.23	Yes	-	144	80	360	320	256
Grebe	11.4 x 12.1	138	3.23	Yes	34	60	42	108	160	128
Coot or Moorhen	7.5 x 12.1	91	3.23	Yes	24	36	29	80	80	64
Grebe & Coot	20 x 12.1	242	3.23	Yes	-	108	-	200	240	192
Coot & Moorhen	15 x 12.1	181	3.23	Yes	-	72	42	160	160	128
Cygnets & Warbler	10.39 x 5.62	58	2.55	Yes	26	33	27	59	40	32
Cygnets	5.27 x 5.62	30	2.55	Yes	10	14	12	34	-	-
Warbler	5.27 x 5.62	40	2.55	Yes	10	10	-	-	-	-
Swan	7.56 x 5.32	40	2.55	Yes	16	-	-	-	-	-
Dipper or Sandpiper	5.12 x 2.87	15	2.55	Yes	10	-	-	-	-	-
Syndicate Rooms 1 - 6	4.6 x 7	32	2.55	No	15	-	-	-	-	-
GROUND FLOOR										
Kingfisher	25.7 x 11.8	303	4.2	Yes	-	144	80	390	320	256
1 Section of Kingfisher	8.5 x 11.8	100	4.2	Yes	-	36	32	100	90	75
2 Sections of Kingfisher	17 x 11.8	200	4.2	Yes	-	72	60	200	180	150
The height and width of the external doors make Kingfisher suitable for car and other product launches										
FIRST FLOOR										
Syndicate Rooms 7 - 10	5 x 3	15	2.55	Yes	8	-	-	-	-	-
Syndicate Room 11	5 x 4	20	2.55	Yes	8	-	-	-	-	-
SECOND FLOOR										
Teal	10.62 x 9.43 max	69	2.35	No	14	-	-	-	-	-